

as the hammered metal canopy bed and the carved pine chest by Mr. Brown. “The room has quiet confidence without being bland or boring,” Kurtz says. “There’s a sense of history the wall panels provide that will create conversations for years to come.”

When it comes to kitchen design, the **KATHRYN LILLY INTERIORS** team feels that all-white kitchens are overdone. This is exactly what led the designers to choose the bold, gray custom cabinetry by Andrews Bolanos of Schlabach Wood Design as the foundation for their design-home kitchen. Though the cabinetry was originally a moody green, the designers changed their plans overnight to appeal to more people. “This space is organically modern with an elegant twist,” Kurtz says. “It stops you in your tracks, just as it was intended to do.” One such showstopper: the modern hood, designed by fellow designer Kara Cox for Thompson Traders. “It is by far my favorite feature in the entire house,” Kurtz says. Porcelain slabs with a mitered edge, by Daltile, sit atop white oak-stained driftwood on the island for a modern, timeless contrast.

Designer **BROOKE COLE**'s bedroom retreat exemplifies modern elegance. She looked to local artist Windy O'Connor's Cherry Blossoms wallpaper as inspiration for this suite's overall design concept, describing it as “elegant and modern, but also serene, soothing, whimsical, and feminine.” Cole states, “I love juxtaposition in design, blending modern and traditional, mixing different design styles or eras, and, in the case of this space, the juxtaposition between the elegant (which can sometimes be interpreted as frilly)



KARA COX
KARA COX INTERIORS
POWDER ROOM



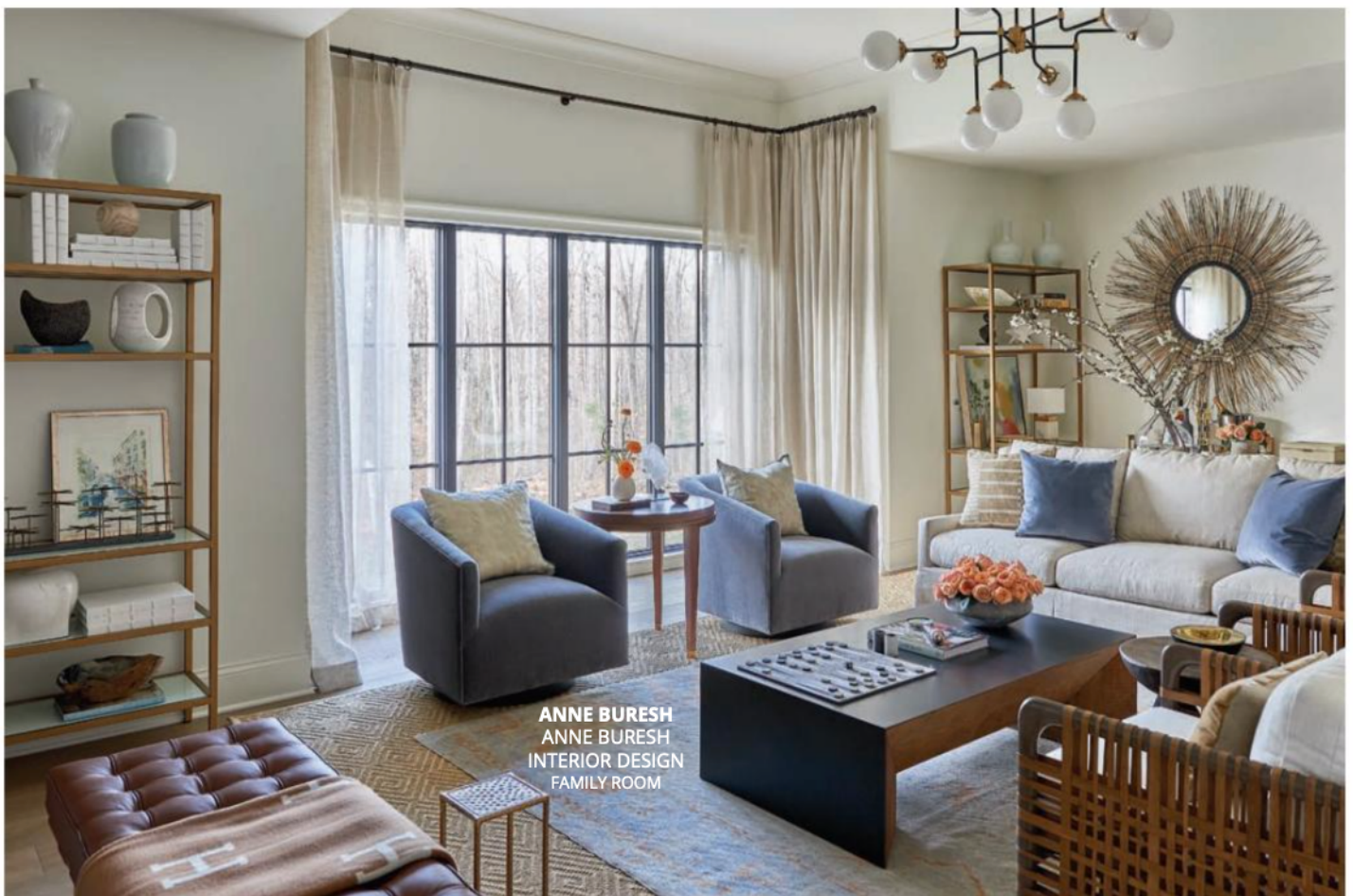
JODY KURTZ, DANA REBHUN
& **SAMANTHA HUMPHREYS**
KATHRYN LILLY INTERIORS
KITCHEN

and the modern.” Cole loves to highlight local talent when possible, so she incorporated several pieces by local artisans, such as custom lamps and sconces made of vintage Murano glass by Louise Gaskill, fabric created by fine artists Alexis Walter and Windy O’Connor, and original artwork by artists Dusty Griffith and Brooke Knaus. The stunning four-foot, three-tier modern brass Halcyon chandelier from Circa Lighting encompasses the vaulted fourteen-foot ceiling space.

To design the family room in the Modern Manor showhouse, designer **ANNE BURESH** used artwork as the springboard for the color palette in this sophisticated space. Using a neutral foundation of ivory-white paint with a slight gray hue allowed the original artwork from Anne Neilson Fine Art Gallery and an abstract piece by artist Marcy Gregg to play center stage in the room’s overall aesthetic. The additional tribal elements such as the skull and horns and the African wooden beads add a cultural and well-traveled feel to the room, while more modern touches like the antique starburst mirror and the chandelier provide a layer of contemporary sophistication.



BROOKE COLE
BROOKE COLE
INTERIORS
SUITE 4



ANNE BURESH
ANNE BURESH
INTERIOR DESIGN
FAMILY ROOM